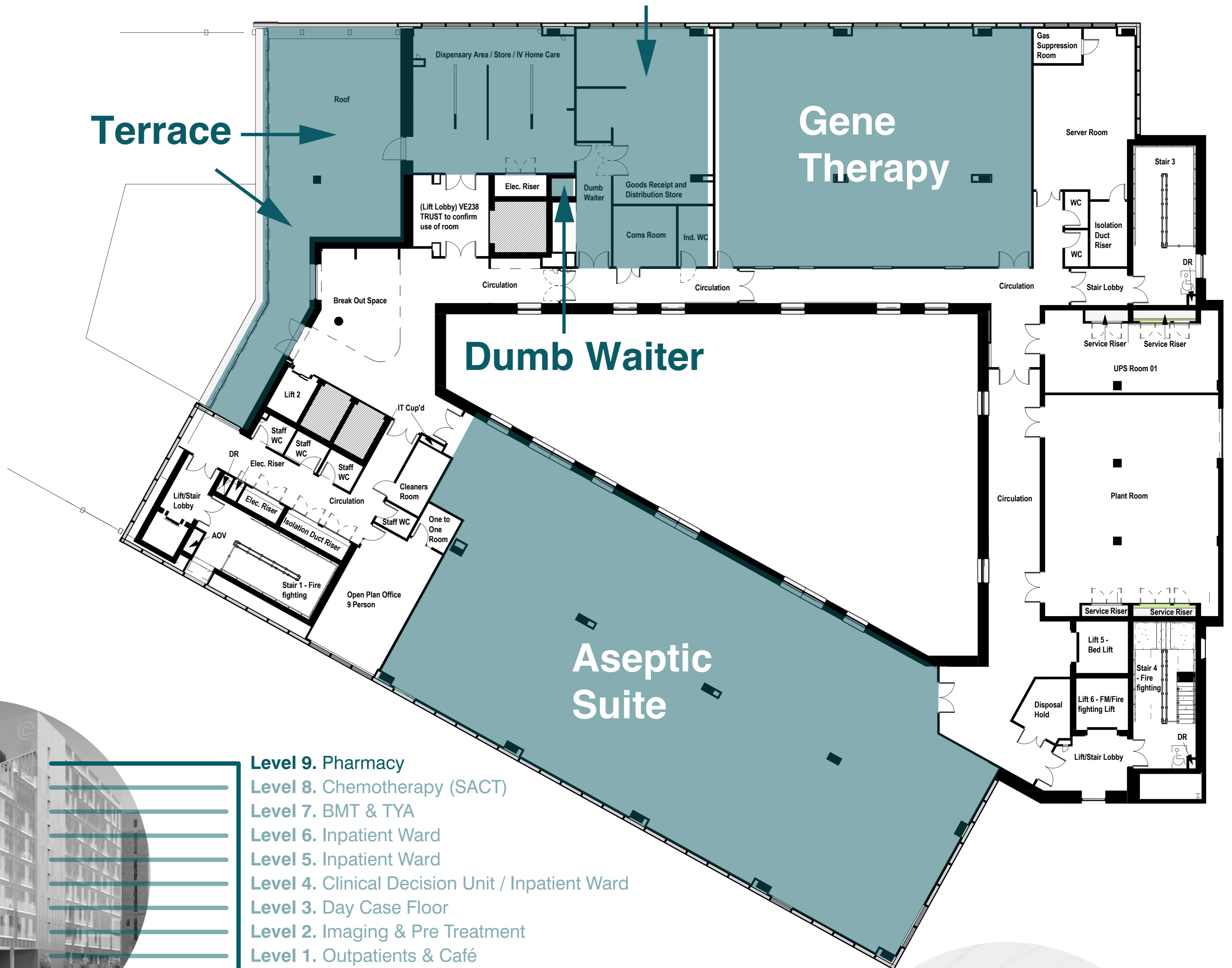


PharmaC Production



- Level 9. Pharmacy
- Level 8. Chemotherapy (SACT)
- Level 7. BMT & TYA
- Level 6. Inpatient Ward
- Level 5. Inpatient Ward
- Level 4. Clinical Decision Unit / Inpatient Ward
- Level 3. Day Case Floor
- Level 2. Imaging & Pre Treatment
- Level 1. Outpatients & Café
- Ground Floor. Main Entrance
- Lower Ground. Radiotherapy

Level 9

Pharmacy

- The new aseptic suite located in the south wing will be using new technology-vaporised hydrogen peroxide (VHP) isolators, this will allow a more efficient batch production process.
- The clinical trials unit will include two dedicated isolators for Gene Therapy and ATIMP (clinical trials).
- The aseptic production unit has been designed to ensure a one way flow of raw materials and final product.
- PharmaC dispensary on Level 7 will have its own connection to PharmaC dispensary counter in the main reception area.



Our plans for Clatterbridge Cancer Centre - Liverpool

Stay updated, visit www.clatterbridgecc.nhs.uk or follow us on social media



@CCCNHS



/ClatterbridgeOfficial

